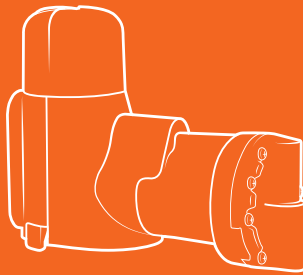


goodnature®



A24 Rat & Mouse Trap

Quick Start Guide

goodnature.co

Doing things differently is in our nature

We started Goodnature for good reason: to see endangered wildlife around the world flourish again. This means getting on top of a bunch of pests - rats and mice for starters. We also want to go about it kindly, without using nasty toxins.

That's why we develop humane traps that automatically reset and are easy and safe to use in living spaces through to wild places. Not only have we created a world-first, we started a revolution.

Your constant control system

Congratulations! You're now the owner of the world's most advanced pest control technology – the A24 Rat and Mouse Trap. Powered using compressed CO₂ gas, Goodnature technology combines design engineering principles and animal behavioural science with the highest manufacturing standards to deliver a trap that will kill 24 times per gas canister.

Our lures are developed to be long life to minimize maintenance effort and maximize freshness to remain highly attractive to pests. As our lures are toxin-free there is no risk of secondary poisoning to wildlife, pets, livestock and working animals. Our unique Trigger and Strike mechanism gives the Goodnature A24 its certified A-Class humane status.

Trap safely

We've designed our traps to target specific pests only. To avoid injuring or killing protected wildlife or any other animal that's good for nature, it's important you follow the installation instructions and our safety advice to set up your trap correctly. For trapping safety advice, tips to maximize success and support biodiversity in your own backyard visit goodnature.co

We're here to help

Drop us an email or pick up the phone - we'd love to help you get rid of your rodents. Big thanks for joining us. Happy trapping!

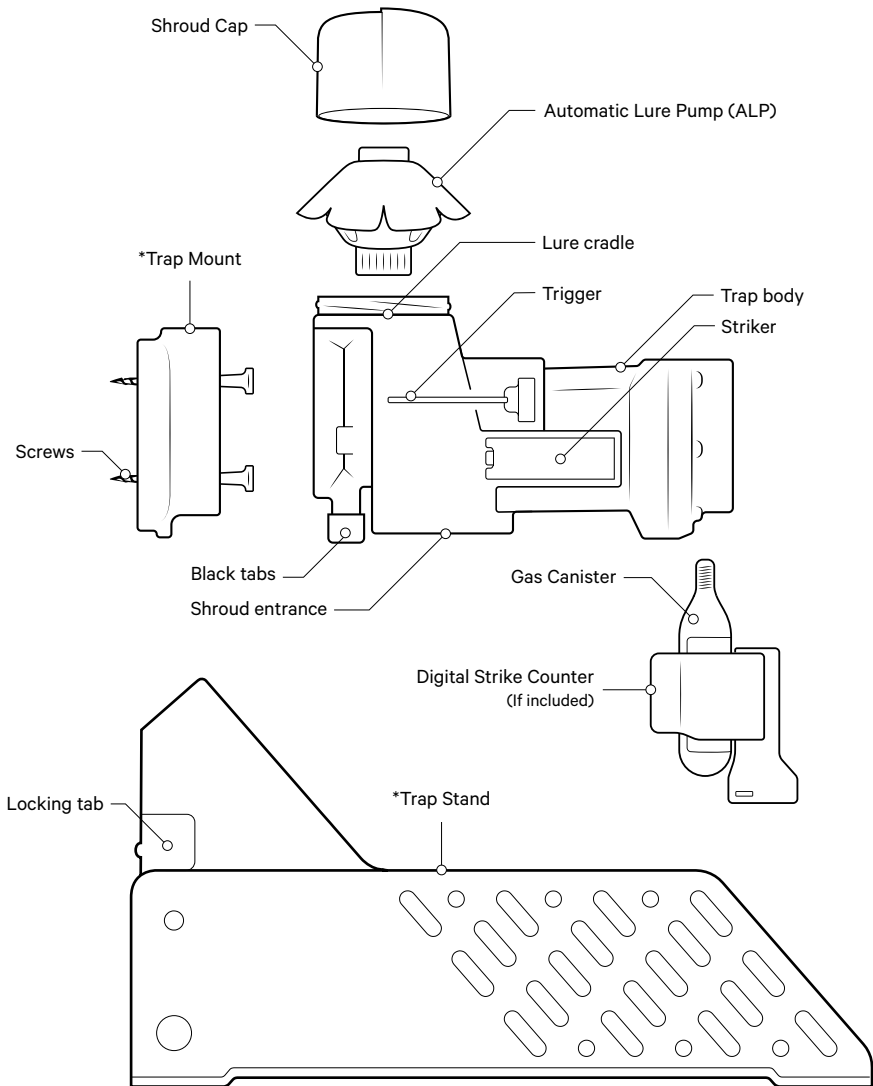


1-877-992-8868

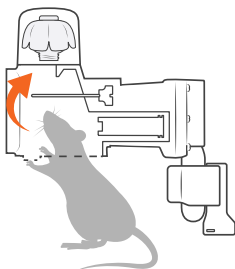


support@goodnature.co

Your Trap - A24

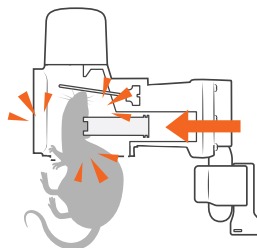


How it works



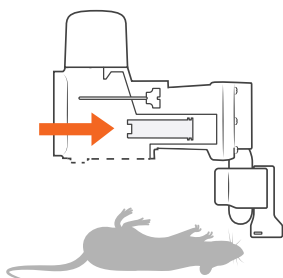
Lure attracts rodents into the trap

The Automatic Lure Pump (ALP) is filled with highly attractive, non-toxic lure and sits at the top of the A24 to lure rats and mice into the trap. The ALP slowly dispenses fresh lure over a 6 month period, so it's always fresh and attractive to rats and mice. Replace your ALP every 6 months.



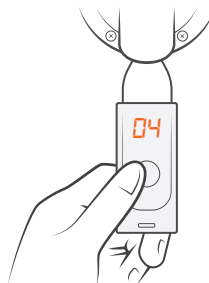
Rodent moves the trigger, firing the trap

The A24 is powered by a CO₂ gas canister and will last for 24 kills. The trigger is placed directly below the lure, so that when the rodent moves the trigger, the trap fires a piston directly into the back of the rodent's head, killing the rodent swiftly and humanely.



The trap automatically resets itself

Once the A24 fires, the rodent drops to the floor as the piston immediately retracts back into the trap – ready for the next one! The A24 gives you constant control over rats and mice without having to visit your trap or touching any dead rodents!

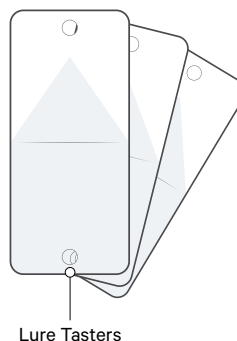
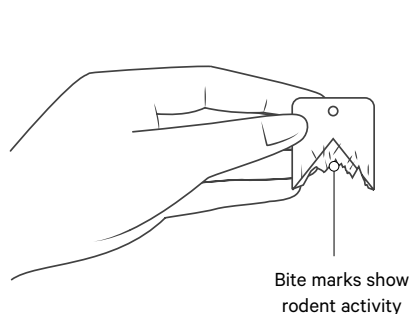


Digital Strike Counter records the kill

It's common for the dead pests below your trap to be scavenged by other species, so it's unlikely you will see everything that is killed. Once installed, the Digital Strike Counter will record the number of rats or mice that your trap has killed before they're scavenged.

NOTE: Not all kits include a Digital Strike Counter.

Lure Taster Cards



What are Lure Taster Cards?

Lure Tasters are small “chew cards” filled with toxin-free lure that act as a pre-feed for your site by introducing a ‘taste’ of the same lure in that’s your A24. When rats and mice come across our chocolate lure, they’ll go looking for more, which will lead them to your trap!

There are two ways the Lure Tasters help you catch your rodents:

1. Lure Tasters act as pre-feed for your site. Rats are wary of changes in their environment and it can take a bit of time for them to show interest in a new lure.
2. Lure Tasters also show you the best places to install your trap. If you see they have bite marks on them, this means you’ve found an area the rodents feel safe enough to stop and eat, which means it’s a good location for your trap.

How to use Lure Tasters

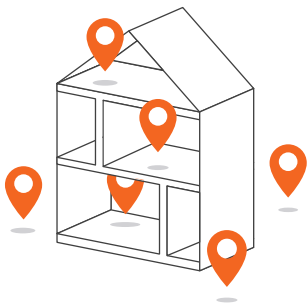
Install your A24 Trap AND put out your Lure Tasters at the same time to start attracting rodents straight away. While your A24 is ready for action, the Lure Tasters will be out pre-feeding your area. The more lure you have available to rodents, the better your chances of success are.

Move your trap

If at first you don’t succeed, move your trap. Moving your trap regularly helps catch all your rats and mice, as there’s never just one. We recommend moving traps to a new spot weekly until you hit on a rodent hotspot. Go to page 11 to find out how to move your trap safely.

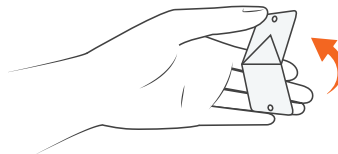
NOTE: If using a Trap Mount you must de-gas the trap before moving it. When you unscrew the gas canister from the trap, this will deplete any remaining gas left in the canister.

Lure Taster installation



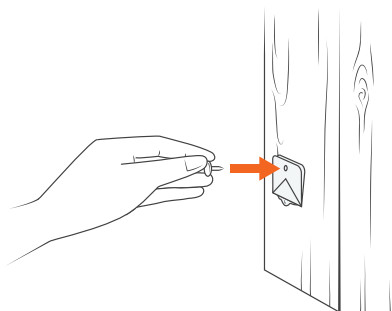
1. Choose up to 6 locations

Your kit comes with 6 Lure Taster cards and pins, so you can choose up to 6 locations around your property to install them. Choose spots near where you have your trap - roughly 20 ft apart.



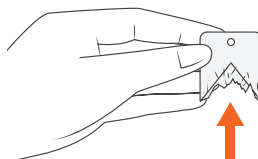
2. Fold the Lure Taster in half

Fold the Lure Taster in half with the orange side facing out. You should see the lure squeezing out when you do this.



3. Pin the Lure Taster to your surface

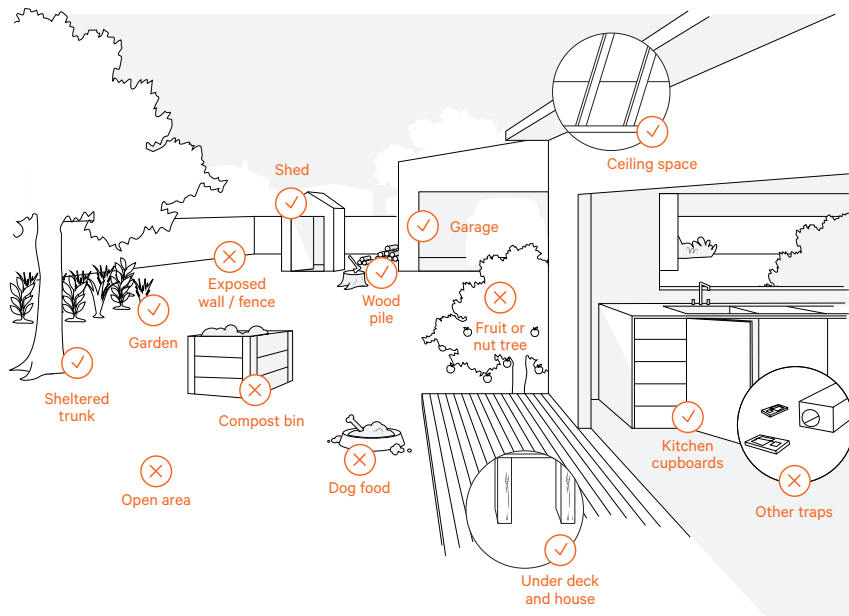
Secure the Lure Taster 5" off the ground, loose enough to allow room for the rodent to get their mouth around the card.



4. Check after 3 nights

If your cards show any sign of rodent activity, that means they feel safe enough to stop for some food, which is exactly where you should install your A24.

Trap locations - At Home



Covered, sheltered and safe



Open, exposed, unsafe or food competition

Where to put your trap at home

The best place is where a rodent feels safe to eat – so choose a spot where they're out of sight. Good places for your trap are in your roof, the corner of your garage or basement, in a kitchen cupboard, all nice and sheltered locations. If you place your trap along a wall or fence line, make sure the trap stand is parallel to the wall.

Look for bite marks

If you've seen your Lure Tasters have been nibbled on, this is a great place to install your trap.

Moving your trap helps catch 'em all

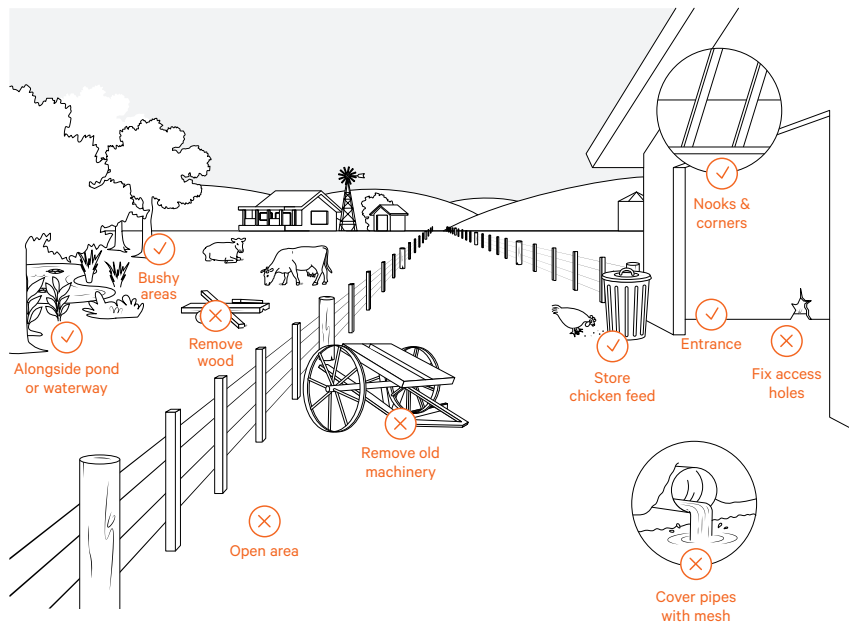
If you don't catch anything after 3 days - simply move your trap to a new location. Moving your trap regularly helps catch all your rats and mice, as there's never just one! We recommend moving traps to a new spot weekly until you find a rodent hotspot.

NOTE: If using a Trap Mount you must de-gas the trap before moving it. When you unscrew the gas canister from the trap, this will deplete any remaining gas left in the canister.

Be patient

Finding the most effective location to catch your rats and mice might take a few attempts. Be patient. Everyone's rodent hotspot is different!

Trap locations - On a Farm



✓ Covered, sheltered and safe

✗ Open, exposed, unsafe or food competition

Where to put your trap on a farm

Rats and mice are more likely to stop and eat in a sheltered place where they feel safe. Inside buildings, good places for traps are near doors or openings, and in nooks and corners. Ideal outdoor locations are near bushy areas alongside waterways, hedges and ponds as rats usually follow the water edge.

Keep it tidy

Store any food sources, such as chicken feed or dog food, in sealed containers and reduce access to other feed and seed storage areas and silos by installing mesh in drains and pipes, and fixing access holes. Clearing away obsolete machinery, wood and building materials around the farm will also reduce rodent hiding places.

Move traps that aren't catching anything

If a trap doesn't catch anything, it is likely in the wrong spot. Moving it a few yards can often make a difference.

Keep your traps firing

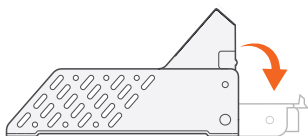
Checking automatic traps a few times a year will ensure they are still firing and baited. If the rat population grows, so should the trapping network

Collaborate

Sharing tips with neighbours is a great way to stay on top of rat problems and be aware of infestations outside of your farm.

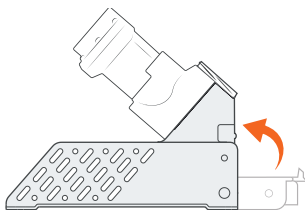
A24 Trap Stand installation (Home Trapping Kit)

NOTE: There are 2 ways to install an A24, using the A24 Trap Stand or the A24 Trap Mount.



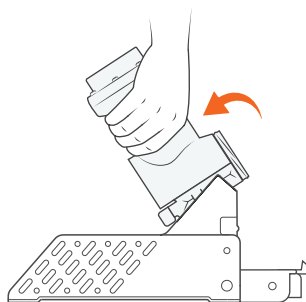
1. Open the Stand Lock

Unclip the orange Stand Lock by reaching your thumb tip right into the end of the orange tab and pressing while pulling backwards.



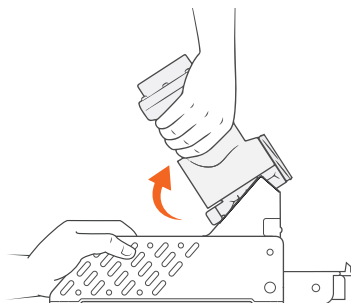
3. Clip in the Stand Lock

Secure the A24 to the stand by closing the orange Stand Lock. You will hear a 'click' when it is in place. Place your trap stand on a flat surface or ground.



2. Attach the A24 to the Trap Stand

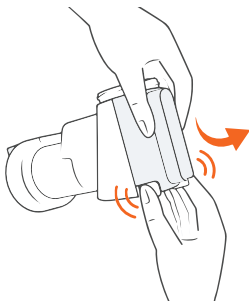
Guide the top slot at the rear of the A24 onto the upper central locking tab of the stand. Gently ease the trap into the stand until it clicks into the lower locking tab. Don't force it, there should be no gap between the A24 and stand.



4. Removing the A24 from the Trap Stand

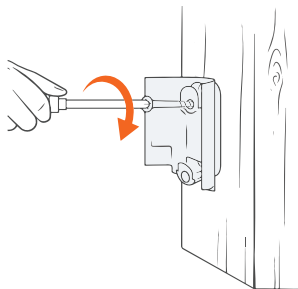
De-gas your A24 by following the instructions on page 11, so it's safe to detach from the Trap Stand. Open the stand lock and on a flat surface, hold the Trap Stand down firmly with one hand and pull the A24 up with the other.

A24 Trap Mount installation



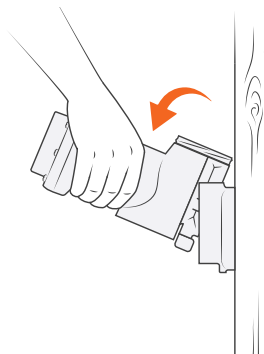
1. **Separate the Trap Mount from the A24**

Using your forefinger and thumb, press the Black Tabs inwards and ease the orange Trap Mount along and off the Trap Body.



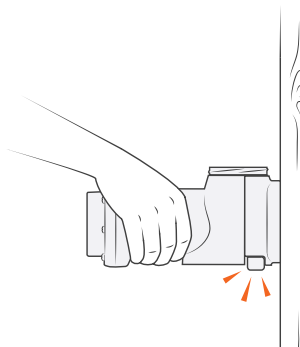
2. **Attach the Trap Mount**

Using a screwdriver, screw in the orange Trap Mount 5" (about a hand width) above the ground onto a straight tree or post. **Do not overtighten the screws.**



3. **Click the A24 onto the Trap Mount**

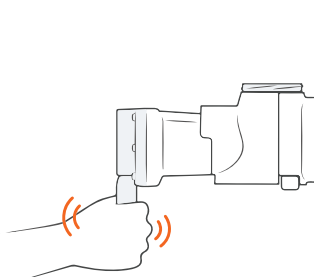
Tilt the Trap Body backwards slightly and lower it onto the top locking tab of the Trap Mount. As you press downwards the Trap Body will be guided in toward the Trap Mount and lock in with a click.



4. **Secure your A24 Trap**

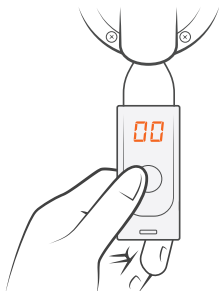
Ensure your Trap is clicked in properly and the Trap Mount is firmly screwed to the tree or post before powering up your A24.

Gas & Lure installation



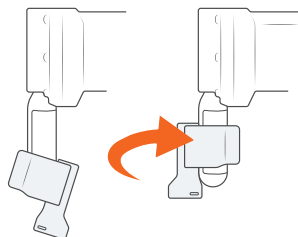
5. Power up your A24

Remove the black cap from the gas canister. Be careful to keep the screw thread clean and free of debris. Screw the canister firmly into the trap. **Hand tighten only.**



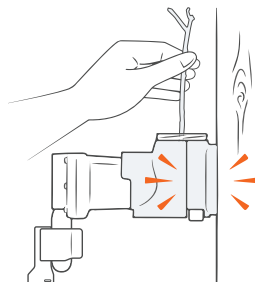
7. Zeroing and checking the Counter

Zero the Counter by pressing the button and holding it down until the display shows '00'. The Counter goes to sleep a few seconds after the button is released. To check the tally on the Counter, quickly press and release the button. The display will show the number killed.



6. Attach the Digital Strike Counter

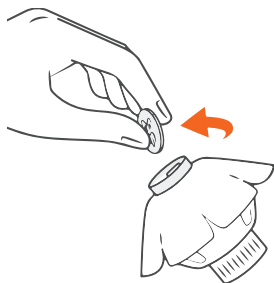
If you purchased a Counter with your A24, slightly wet the inside of the rubber strap for lubrication and rotate the Counter counter-clockwise as you ease it up the canister. **The Counter display must face directly away from the trap.**



8. Test-fire your A24

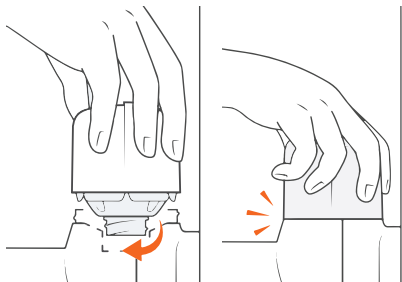
To test fire the A24, reach a pen or twig down through the top of the trap and push the Trigger gently to the side. The Striker will fire with a bang and then retract. **Always keep your hands clear of trap entrances, don't hold trap in your hands during test-fire and always treat the trap as live.**

Trap is not covered under warranty when trap breaks during test-fire and is not mounted onto the portable Trap Stand or Trap Mount at the time.



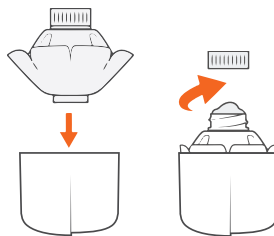
9. Activate the Automatic Lure Pump (ALP)

Remove the coin from the top of the ALP to activate the technology that slowly forces a steady stream of lure out for a 6 month period. When enough lure is forced out it will drop off and onto the ground and act as pre-feed, allowing rodents to build up their food preference before they enter the trap.



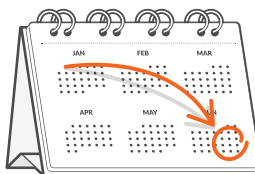
11. Secure the Shroud Cap and ALP

Place the Shroud Cap with the ALP into the Lure Cradle and screw into the internal thread with a few turns. Once the ALP is screwed into the Lure Cradle, secure the Shroud Cap onto the trap by pushing down and clicking into place with one last turn. The ALP is now set and active!



10. Nest the ALP into the Shroud Cap

While keeping the Cap on the ALP, shape it into the Shroud Cap far enough so that its skirted edge sits aligned with the edge of the Cap. Now remove the ALP's Cap and a small amount of lure may be forced out, that's fine – just wipe this excess lure below the entrance of your trap as more pre-feed.



12. Replace Gas and ALP every 6 months

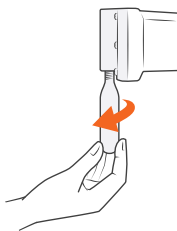
Your ALP will last for up to 6 months, so make a note of when you'll need to replace your lure next. Your trap is only as good as its lure, so it's important your lure is always fresh and attractive. Replace your Gas Canister at the same time, this ensures your trap is always powered and ready to strike at any moment.

Moving your A24 safely



NOTE: If your A24 is on a Trap Stand you don't need to de-gas it before you move it.

If your A24 is on a Trap Mount, **you must de-gas it** before you can safely move your A24 to another location.

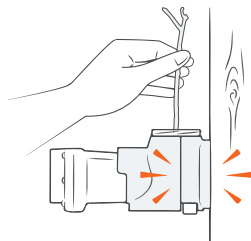
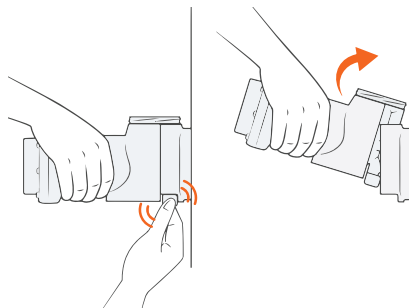


1.

De-gas your A24

When you unscrew the gas canister from your trap, this will deplete any remaining gas! Make sure you have a spare gas canister before moving your trap.

1. Remove the Counter (if you have one) by screwing it counter-clockwise as you ease it down the gas canister.
2. Hold the gas canister with a cloth to protect your hands and unscrew the gas canister from the trap. **Be careful as the gas canister will freeze rapidly when you unscrew it from the trap.**



2.

Remove the final charge from the A24

Although the gas canister has been removed, the trap may still be live with one or more charges remaining in its chamber.

Test fire your trap by taking off the Shroud Cap and using a pen or a twig, reach down through the top of the trap and push the Trigger (thin metal rod) to one side. Keep pushing on the trigger until all gas has been flushed out.

Always treat the trap as live until you have de-gassed and test fired it. If the trap doesn't fire when triggered, the trap has successfully been de-gassed.

3.

Detach the A24 from the Trap Mount

With the trap de-gassed, your trap is now safe to detach from the Trap Mount. Using your thumb and forefinger, squeeze the Black Tabs and with upward pressure pull the trap up and off the Trap Mount.

Always keep fingers clear of trap entrances.

Declaration & warnings

EC and UK Declaration of Conformity of machinery (original)

This declaration relates exclusively to the machinery in the state in which it was placed on the market, and excludes components which are added and/or operations carried out subsequently by the final user.

Product: Rat Trap / Rat and Mouse Trap, A24; including trap mount kit and blocker accessories.

Manufacturer: Goodnature Limited, 8 Horner Street, Newtown, Wellington 6021, NEW ZEALAND

Technical File Authorised owner: Craig Bond, 8 Horner Street, Newtown, Wellington 6021, NEW ZEALAND

This product fulfils all relevant provisions of the Machinery Directive UK Statutory Instruments 2008 No. 1597 Supply of Machinery (Safety) Regulations 2008.

Signed for an on behalf of: Goodnature Limited, Wellington

Place and date of Issue:
Goodnature Limited, 8 Horner Street, Newtown, Wellington 6021, NEW ZEALAND, 10th January - 2020

Name, Function, Signature:
Craig R. Bond, Director



Warnings

- USE ONLY Goodnature CO₂ Canisters. Use of other canisters will void warranty
- NEVER use a petroleum-based lubricant in your trap
- ALWAYS store CO₂ Canisters below 49°C
- NEVER leave CO₂ Canisters in a vehicle on a hot day
- ALWAYS dispose of used CO₂ Canisters responsibly
- NEVER crush CO₂ Canisters or put in a fire
- NEVER allow children to play with or around traps
- NEVER submerge your trap
- NEVER use a damaged trap
- NEVER modify your trap
- ALWAYS act responsibly
- USE ONLY as recommended in this quick start guide
- ALWAYS wear appropriate safety gear when setting and firing a trap
- DO NOT install the CO₂ Canister until the trap is correctly mounted
- ALWAYS remove the CO₂ Canister and test-fire to remove final charge before removing the trap from its mounted position
- ALWAYS treat your trap as LIVE
- ONLY test fire your trap as directed: see section: Moving Your Trap
- ALWAYS remove the CO₂ Canister and test-fire to remove final charge before moving the trap
- ALWAYS test-fire to remove final charge from the trap after removing the CO₂ Canister and before removing it from the trap mount: see section: Moving Your Trap
- ONLY set traps at the height recommended in this guide and be considerate of others when choosing the traps location
- NEVER put hands or objects in the entrance of the trap
- NEVER fire and re-fire the trap in quick succession
- Contains gas under pressure; may explode if heated
- Protect from sunlight. Store in a well-ventilated place
- UN2037 / EN16509
- Carbon Dioxide CO₂, CAS: 124-38-9, 16g



Trap is not covered under warranty when trap breaks during test fire and is not mounted onto the portable Trap Stand or Trap Mount at the time. Rodent damage is not covered under manufacturer warranty.



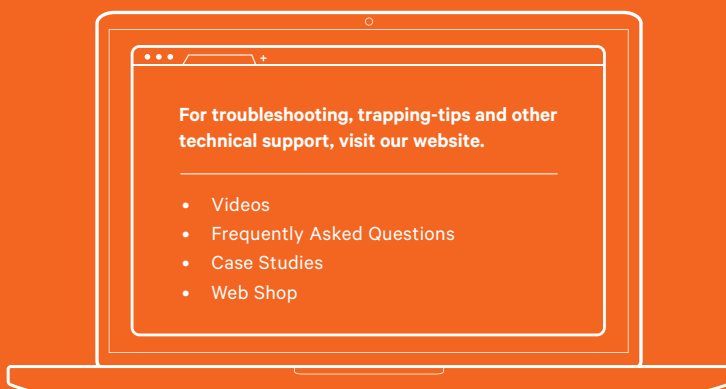
goodnature.co.nz/alp-battery-removal
1.4 v

NOT FOR HUMAN CONSUMPTION

Lure contains nuts, milk & soya products.



goodnature.co



Please recycle after use. This material has been printed using vegetable oil-based/mineral oil-free inks. Printed on uncoated woodfree paper produced from eucalyptus fibres and sourced from sustainable forests.