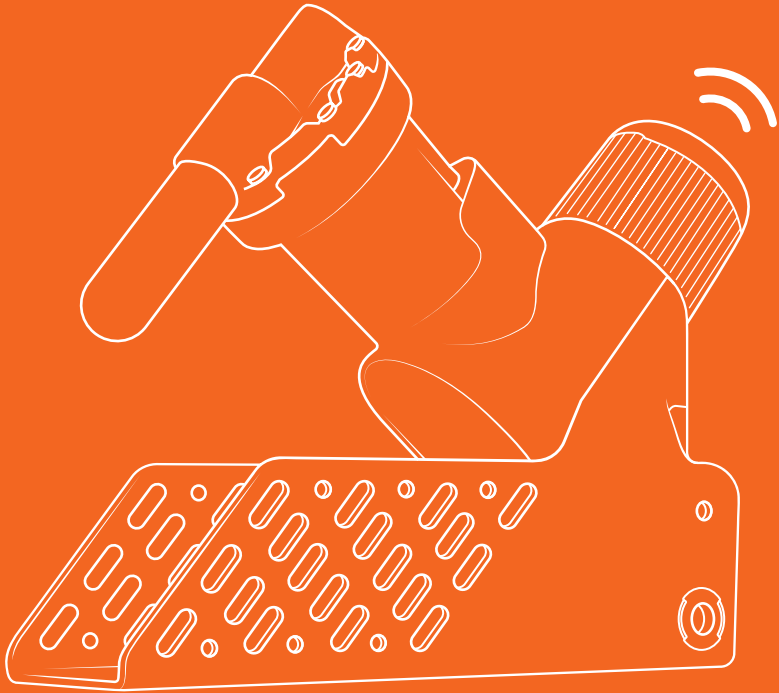


goodnature®



Smart Trap Kit

Quick Start Guide • Schnellstartanleitung • Lynvejledning
Snelstartgids • Guide de démarrage rapide • Snabbguide
Hurtigstartveiledning • Guía de inicio rápido

Scan QR Code for the full online instruction guide.





English

Keep your hands clear from the trap's entrance at all times.

Follow our safety advice and these installation instructions in the order they appear to set up your trap correctly.

Scan the QR code at the bottom of this page to access the full A24 instructions in multiple languages.

We're here to help. You can contact us via phone or email – visit goodnaturetrapping.com

Deutsch

Nie mit den Händen in die Nähe der Fallenöffnung kommen.

Befolgen Sie unsere Sicherheitshinweise und diese Montageanleitung in der angegebenen Reihenfolge, um die Falle richtig zu installieren.

Scannen Sie den unten angegebenen QR-Code ein und Sie erhalten Zugriff auf die vollständige Anleitung zur A24 in verschiedenen Sprachen.

Wir sind hier, um Ihnen zu helfen. Sie können uns per Telefon oder E-Mail direkt kontaktieren – besuchen Sie goodnaturetrapping.com

Dansk

Hold altid hænderne væk fra indgangen til fældene.

Følg vores sikkerhedsråd og oplysningerne om installering i den rigtige rækkefølge for at opstille fældene korrekt.

Scan QR koden nederst på siden for at se den komplette A24 vejledning på flere sprog.

Vi er klar til at hjælpe. Du kan kontakte os via telefon eller mail - gå til goodnaturetrapping.com

Nederlands

Kom nooit met uw handen te dicht bij de ingang van de val.

Lees onze veiligheidsstips en deze installatie-instructies in de aangegeven volgorde om uw val op de juiste wijze op te stellen.

Scan de QR-code onderaan deze pagina voor toegang tot de volledige A24-instructies in meerdere talen.

We zijn er om u te helpen. Neem contact met ons op per telefoon of e-mail – ga naar goodnaturetrapping.com

Français

Veillez à ne jamais introduire les doigts dans l'entrée du piège.

Suivez nos consignes de sécurité et ces instructions d'installation dans l'ordre où elles sont données pour installer le piège correctement.

Scannez le QR code au bas de cette page pour accéder au mode d'emploi complet de l'A24 dans plusieurs langues.

Pour toute question, n'hésitez pas à nous contacter par téléphone ou par e-mail. Vous trouverez nos coordonnées sur goodnaturetrapping.com

Svensk

Se alltid till att hålla händerna borta från fällans öppning

Följ våra säkerhetsrekommendationer och dessa installationsanvisningar i den ordning de visas för att installera fällan korrekt.

Skanna QR-koden längst ner på den här sidan för att få tillgång till de fullständiga A24-instruktionerna på flera språk.

Vi finns här för att hjälpa dig. Du kan kontakta oss via telefon eller e-post – besök goodnaturetrapping.com

Norsk

Hold alltid hendene borte fra felleinngangen.

Følg sikkerhetsrådene våre og denne installasjonsveiledningen i korrekt rekkefølge for å sette opp fellen riktig.

Scan QR koden nederst på denne siden for å se den komplette A24 instruksjonsguiden på flere språk.

Vi er her for å hjelpe deg. Kontakt oss på telefon eller e-post – Besøk www.goodnaturetrapping.com

Español

No acerques las manos a la entrada de la trampa en ningún momento.

Para instalar la trampa correctamente, sigue paso a paso las instrucciones y los consejos de seguridad.

Escanear el código QR al final de esta página para ver todas las instrucciones del A24 en diferentes lenguas.

Estamos aquí para ayudar. Puedes contactarnos por teléfono o email. Visita goodnaturetrapping.com

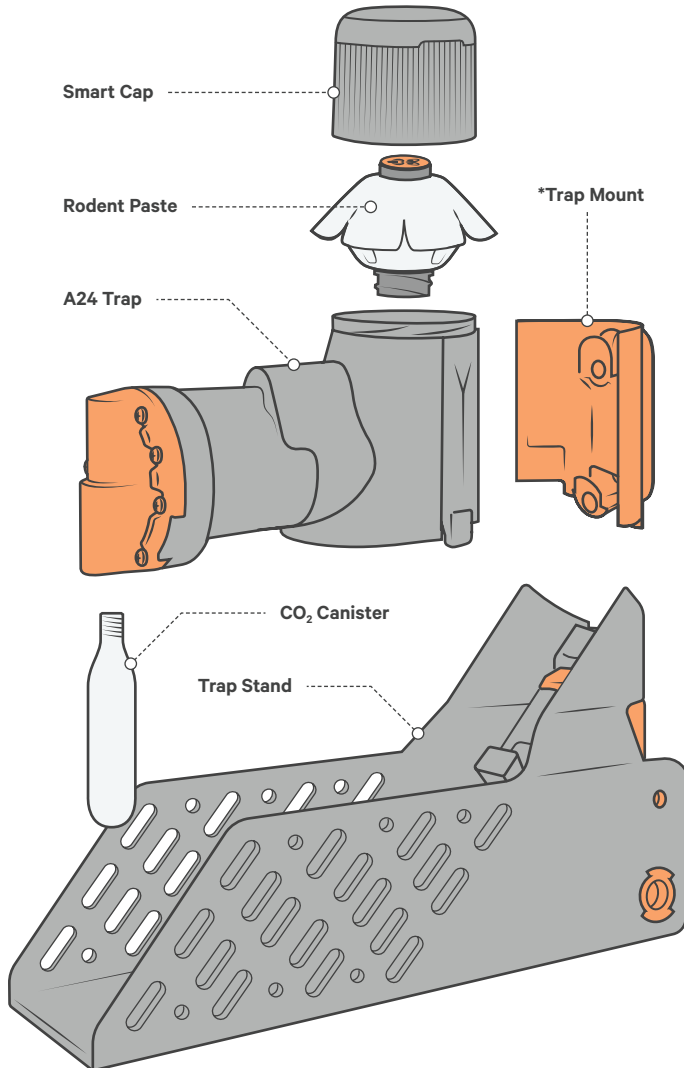
Scan the QR code for the full online instruction guide

Open the built-in camera app or download a free QR code scanning app. Hold your phone over the QR code and follow the link.



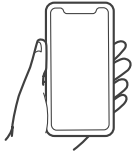
Smart Trap Kit

The Trap Stand and the Trap Mount enable two different ways of installing your trap. Stands allow more flexibility and Mounts provide a robust fixing option for exposed environments. Mounts also allow you to raise your trap vertically on a tree or post which can help avoid unintended non-target species interactions (visit goodnaturetrapping.com for additional resources).



**Trap Mount included in NZ & AU kits only, or sold separately.*

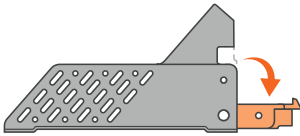
To install your Smart Trap Kit



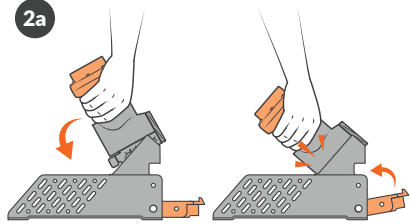
- 1 Download the Goodnature app
- 2 Create your account
- 3 Follow the installation instructions in the app.

Installation

1a

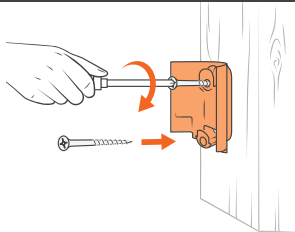


2a

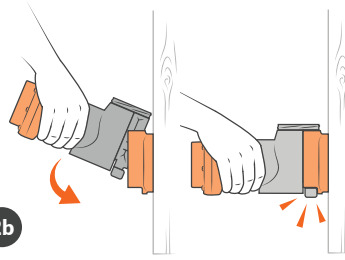


Or, if installing on a Trap Mount (NZ & AU kits or sold separately)

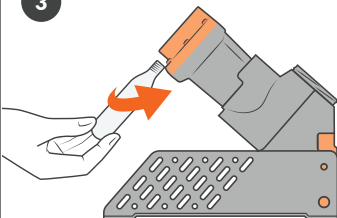
1b



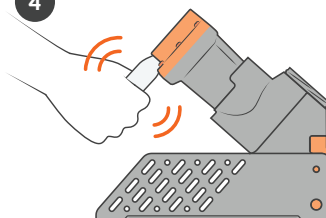
2b



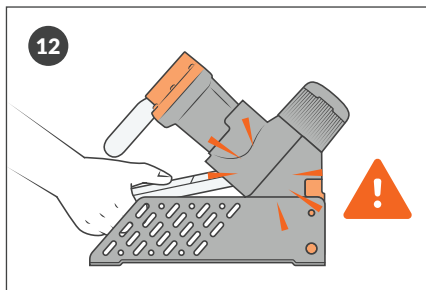
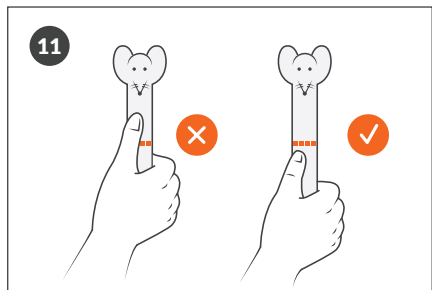
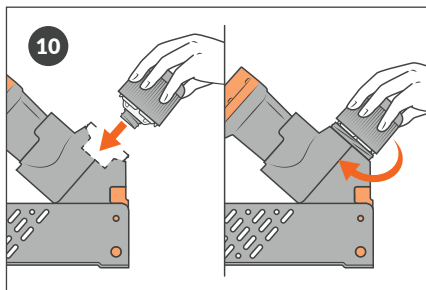
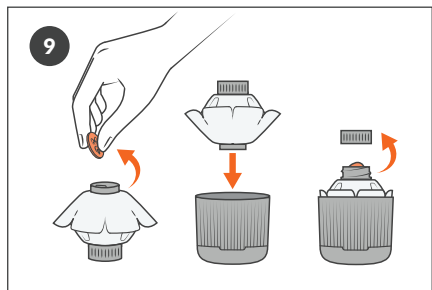
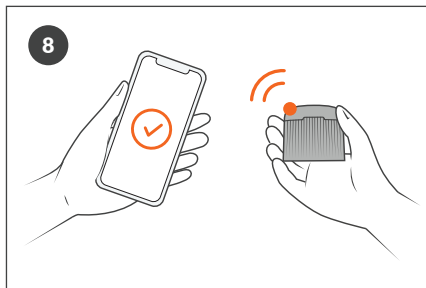
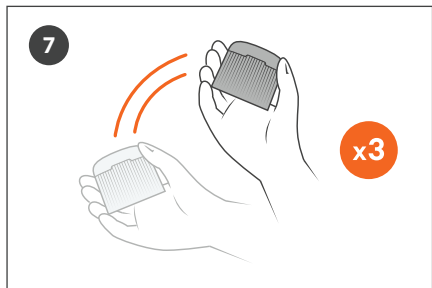
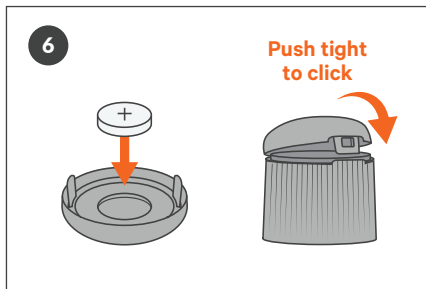
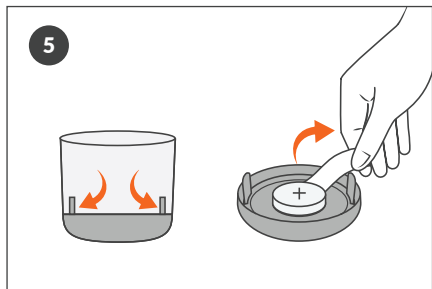
3



4



Installation



Top tips for success



1. Use Trap Location Cards

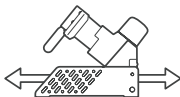
Use your Trap Location Cards (3x included) to determine the best location for your trap.

To use them, fold in half and set them in 3 different areas. Leave them out for 1-3 days, then check to see if they've had rodent interaction. A chewed up card indicates a good spot to install your trap.



3. Finding the best trapping area

This is the most important step when installing your trap. Look for places where rodents will stop to investigate the trap. Rodents are comfortable in places where they are hidden and covered.



5. Move your traps regularly

If you don't catch anything in the first couple of days, move your trap to a new location. Moving your trap regularly helps catch all the rodents, as there's often more than one.

If you installed your trap onto a Trap Mount, you must remove the CO₂ Canister and safely test-fire your trap (steps 11-12) before moving it to another location. Note: This will expel any remaining CO₂ and you will need to replace the canister with a new one.



2. Top-up every 6 months

Replace the CO₂ Canister and Rodent Paste every 6 months so you always have enough charge for your trap to fire, and fresh paste to attract pests.

IMPORTANT: Leaving the CO₂ Canister in the trap for more than 6 months can cause damage to the seals in the regulator and voids your trap's warranty.



4. Eliminate all competing food sources

Rodents will ignore a new food source (like our Rodent Paste) if they have easy access to their usual food sources.

To eliminate any competing food source, store all potential rodent food sources such as animal feed, pet food or compost in sealed rodent proof containers.

Consider using Goodnature pre-feed paste to get rodents on the scent towards your trap.



6. Target species

Our A24 trap is designed for trapping rats, mice and stoats. If you'd like to trap Grey Squirrels in the UK, check out our A18 trap. All use of traps is subject to legislation set out in the Spring Traps Approval Order for each country.

For more advice on trapping with the A24 and A18 in the UK, visit – goodnaturetraps.co.uk



Warnings

- USE ONLY Goodnature CO₂ Canisters. Use of other canisters will void warranty
- NEVER use a petroleum-based lubricant in your trap
- ALWAYS store CO₂ Canisters below 49°C
- NEVER leave CO₂ Canisters in a vehicle on a hot day
- ALWAYS dispose of used CO₂ Canisters responsibly
- NEVER crush CO₂ Canisters or put in a fire
- NEVER allow children to play with or around traps
- NEVER submerge your trap
- NEVER use a damaged trap
- NEVER modify your trap
- ALWAYS act responsibly
- USE ONLY as recommended in this quick start guide
- ALWAYS wear appropriate safety gear when setting and firing a trap
- DO NOT install the CO₂ Canister until the trap is correctly mounted
- ALWAYS remove the CO₂ Canister and test-fire to remove final charge before removing the trap from its mounted position or moving your trap
- ALWAYS treat your trap as LIVE
- ONLY test fire your trap as directed
- NEVER put hands or objects in the entrance of the trap
- NEVER fire and re-fire the trap in quick succession
- ONLY set traps at the height recommended in this guide & be considerate of others when choosing the traps location
- Contains gas under pressure; may explode if heated
- Protect from sunlight. Store in a well-ventilated place
- UN2037 / EN16509
- Carbon Dioxide CO₂, CAS: 124-38-9, 16g
- Do not ingest battery, Chemical Burn Hazard
- This product contains a coin/button cell battery. If the coin/button cell battery is swallowed, it can cause severe internal burns in just 2 hours and can lead to death
- Keep new and used batteries away from children
- If the battery compartment does not close securely, stop using the product and keep it away from children
- If you think batteries might have been swallowed or placed inside any part of the body, seek immediate medical attention



Warranty

Our manufacturing warranty does not cover claims resulting from misuse, abnormal use, or installation contrary to instructions, transportation damage (including airline or freight damage), dropped goods, negligence, second hand product, modified product (including use of CO₂ canisters not supplied by Goodnature).

Leaving the CO₂ Canister in the trap for more than 6 months can cause damage to the seals in the regulator and voids your trap's warranty.

This trap is warranted for two years from date of purchase against defects in material and workmanship. If we determine that the product has a manufacturing fault, we will repair or replace it free of charge to you.

This trap is not covered under warranty when trap breaks during test fire and is not mounted onto the portable Trap Stand or Trap Mount at the time. Rodent damage is not covered under manufacturer warranty.

EC & UK Declaration of Conformity of Machinery (original)

This declaration relates exclusively to the machinery in the state in which it was placed on the market, and excludes components which are added and/or operations carried out subsequently by the final user.

Product: Rat Trap / Rat and Mouse Trap, A24, used with or without the following accessories: Trap Mount, Trap Stand and Blocker.

Manufacturer: Goodnature Limited, 8 Horner Street, Newtown, Wellington 6021, NEW ZEALAND

Technical File Authorised owner: Craig Bond, 8 Horner Street, Newtown, Wellington 6021, NEW ZEALAND

This product fulfils all relevant provisions of the Machinery Directive UK Statutory Instruments 2008 No. 1597 Supply of Machinery (Safety) Regulations 2008.

Signed for an on behalf of: Goodnature Limited, Wellington

Place and date of Issue:
Goodnature Limited, 8 Horner Street, Newtown, Wellington 6021, NEW ZEALAND, 28th June 2022.

Name, Function, Signature:
Craig R. Bond, Director

Simplified EU Declaration of Conformity (Original)

Hereby, Goodnature Limited declares that the radio equipment type "Smart Cap" Bluetooth Transmitter is in compliance with Directive 2014/53/EU (RED) and 2011/65/EU (RoHS); and UK regulations "Radio Equipment Regulations 2017" and "The Restriction of the Use of Certain Hazardous Substances in Electrical and Electronic Equipment Regulations 2012".

The full text of the EU declaration of conformity is available at the following internet address: www.goodnature.co.nz/pages/terms-and-conditions

To access the app legal and regulatory information, in the Goodnature App, select the  icon in the bottom navigation bar and select "Legal and Regulatory".

NOT FOR HUMAN CONSUMPTION – Paste contains nuts, milk & soy

14 v
goodnature.co.nz/alp-battery-removal



goodnature®



goodnaturetrapping.com



Please recycle after use. This material has been printed using vegetable oil-based/mineral oil-free inks. Printed on uncoated wood-free paper produced from eucalyptus fibres and sourced from sustainable forests.

33-161 REV 01